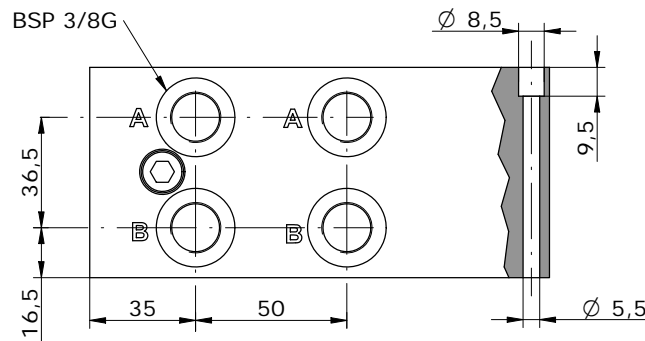
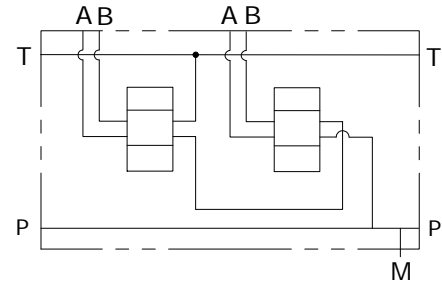
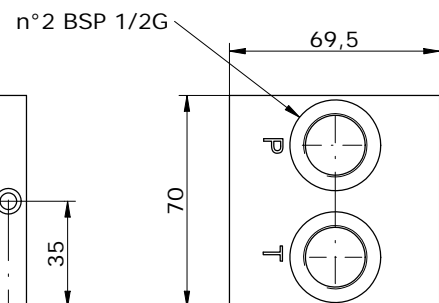
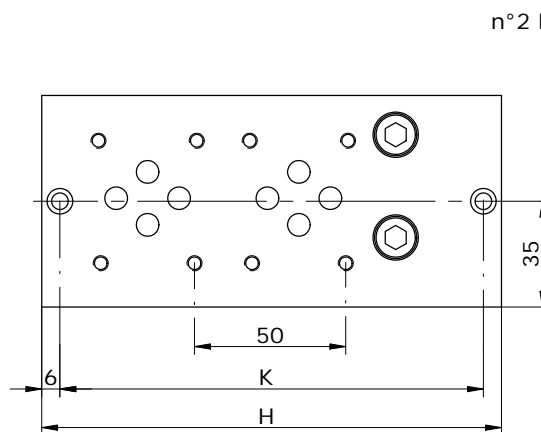
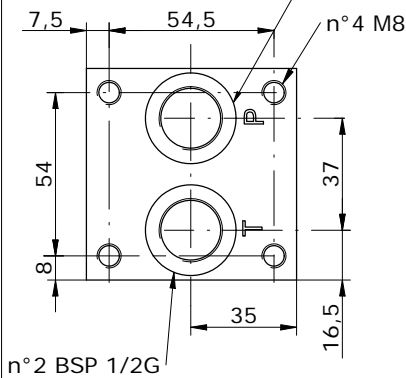


Schema idraulico
Hydraulic diagram



INTERFACCIA AUSILIARE SU ELEMENTI
AGGIUNTIVI (USARE OR2106)
INTERFACE FOR ADDITIONAL AUXILIARY
ELEMENTS (USE OR2106)



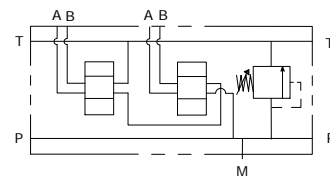
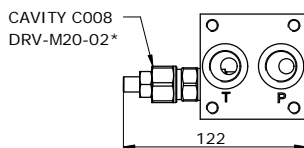
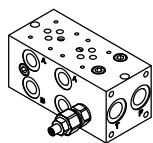
E_06 - 19 - 38 - ___ - 0

POS.	02	03	04	05	06	07	08
H	152	202	252	302	352	402	452
K	140	190	240	290	340	390	440

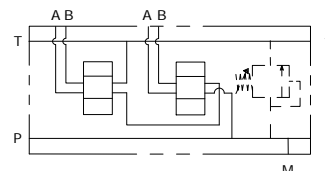
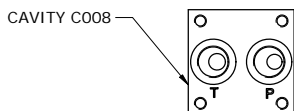
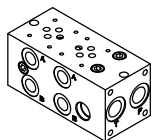
**MONOBLOCCO A-B LATERALI 3/8" P-T 1/2" BSP CON VALVOLA EL. OPZIONALE,
CIRCUITO IN SERIE**
**MONOBLOCK A-B ON SIDE 3/8" P-T 1/2" BSP WITH OPTIONAL VENTING VALVE,
SERIES CIRCUIT**



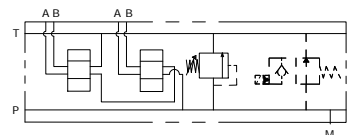
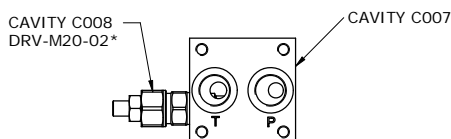
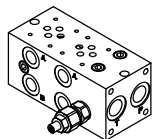
E_06 - 19 - 38 - ___ - 1



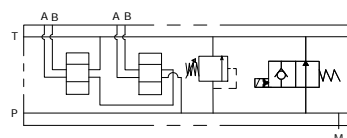
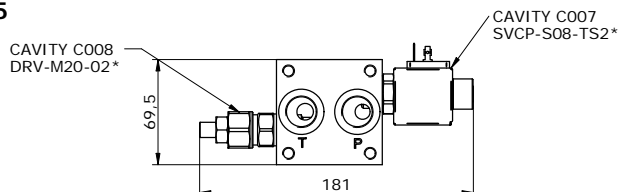
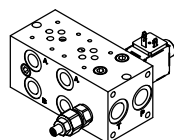
E_06 - 19 - 38 - ___ - 2



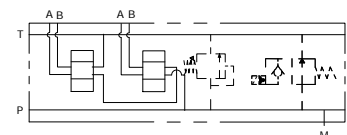
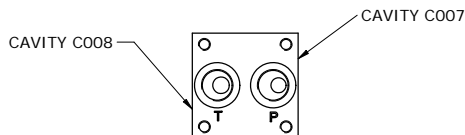
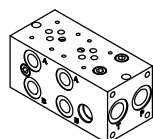
E_06 - 19 - 38 - ___ - 4



E_06 - 19 - 38 - ___ - 5



E_06 - 19 - 38 - ___ - 6



E_06 - 19 - 38 - _____

S = STEEL
A = ALUMINIUM

MOUNTING POSITIONS: 01-08

0 = WITHOUT RELIEF VALVE
1 = WITH RELIEF VALVE
2 = RELIEF VALVE READY
4 = WITH R.V. AND V.V. READY
5 = WITH R.V. AND V.V.
6 = V.V. READY AND R.V. READY

0 = WITHOUT R.V.
1 = 5-55 bar
2 = 25-110 bar
3 = 50-215 bar
4 = 100-350 bar
5 = 100-420 bar

0 = WITHOUT RELIEF VALVE
H = HEX. HEAD SCREW **K** = KNOB **C** = COVER CAP **I** = NOT ADJUSTABLE



SEALS
N = BUNA
V = VITON

VENTING VALVE
000 = WITHOUT V.V.
TS2 = NORMALLY OPEN

VENTING VALVE
0 = NO MANUAL OVERRIDE
3 = PUSH PIN
4 = PUSH BOTTON
5 = HEX. ALLEN

CONNECTOR TYPE
0 = WITHOUT COIL
C = CAVI / LEADS
D = DIN 43650
G = DEUTSCH DT04-2P
A = AMP JUNIOR

TENSIONE / VOLTAGE
000 = WITHOUT COIL
D12 = 12 VDC
D24 = 24 VDC
220 = 220 RAC

* see **CARTRIDGE VALVES** datasheets

Via Nicolò Copernico 12/c-d
29027 Casoni Di Gariga - Podenzano (PC) Italy

www.oleodinamica2mp.it
Tel +39 0523 523231
Fax +39 0523 524509